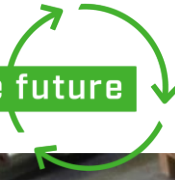




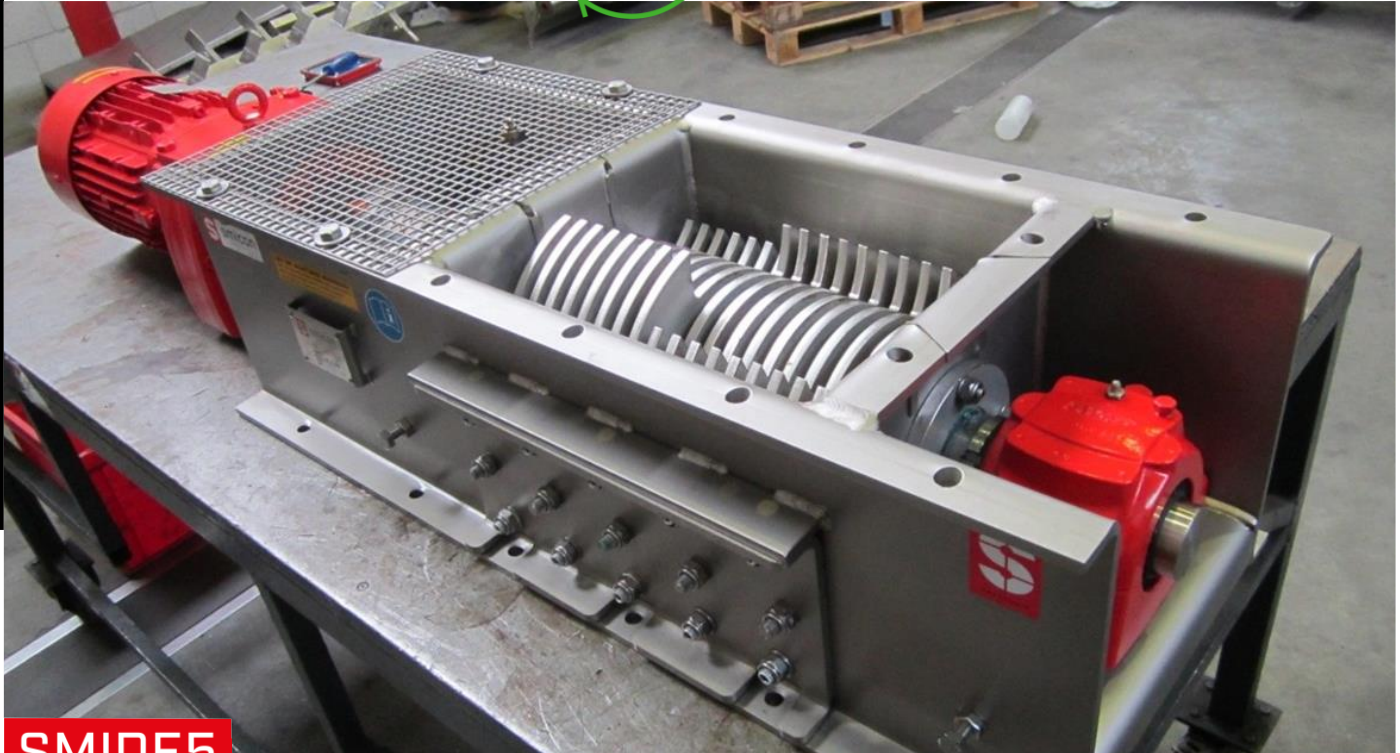
# smicon

improve the process

improve the future

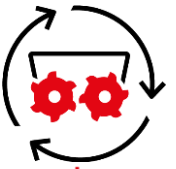


# SHREDDING



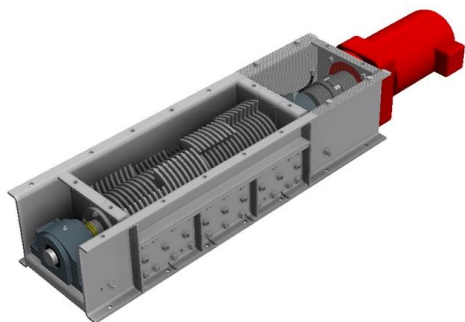
## SMIDE5

SMIDE5 shredders or coarse cutters cut potatoes, fruit, vegetables, foodstuffs and residual products into smaller parts, for example reducing particles size diameter to < 10 mm. As a result, organic products are easier to pump and process. The shredders are single shaft machines. The machine is of a modular design, enabling the product size to be controlled by adjusting the set of blades. Since the early nineties the SMIDE5 shredders have frequently been used in the animal feed and recycling industries. Furthermore, the SMIDE5 shredders are used to prepare flows of organic matter so that these are suitable for processing in fermenting, digesting and composting installations as well as the food industry

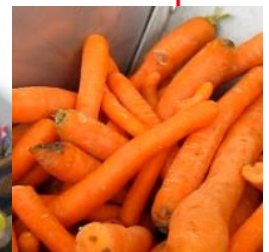


► Available with multiple blade types

► The modular designed machine enables the product size to be controlled by adjusting the set of blades



**INPUT**  
VEGETABLES,  
(UN)PACKAGED  
AND ORGANICS



**OUTPUT**  
SHREDDED  
PRODUCTS

# SMIDE5

## TECHNICAL DATA

| Dimensions   |                                 |
|--|---------------------------------|
| Machine general  | 1270x370x270 mm (without drive) |
| Infeed   | 676x280 mm                      |
| Outfeed  | 676x280 mm                      |
| Large fibres   | Depending on the settings       |
| Transport dimensions   | 1760x370x420 mm                 |
| Transport volume   | 0,18 m <sup>3</sup>             |
| Clear zone   | 3360x1970 mm                    |
| Blade width  | 8 / 15 / 30 mm                  |
| Weight   |                                 |
| Weight   | 290 kg                          |
| Floor load   | 2900 N total static             |
| Transport weight   | 290 kg                          |
| Drive  |                                 |
| Power  | 4 / 5,5 / 7,5 kW                |
| R.p.m shaft<br>IP rating   | 56 to 74<br>IP56                |
| Product information  |                                 |
| Capacity   | 0-100 m <sup>3</sup> /hour      |
| Product temperature  | 0-70 °C                         |
| Other specifications   |                                 |
| A-weighted sound pressure level  | 74 dB                           |
| C-weighted instantaneous sound pressure                                  | < 130 dB                        |
| Technical data is specified according to the machine without accessories |                                 |

| Accessories                      |         |
|----------------------------------|---------|
| Infeed funnel                    | Frame   |
| Service box                      | Control |
| Clearance area and illustrations |         |

